

MICHIGAN STATE UNIVERSITY
STUDENT RECREATION AND WELLNESS CENTER

TABLE OF CONTENTS

BID PACKAGE 1

Claridge		
Claridge	Glass Marker Board	MB1
Claridge	Fabric Tack Board	TB1
Columbia Lockers		
Columbia Lockers	Phenolic Lockers	S8
GearGrid		
GearGrid	Grid Wall	AC6
Safco		
Safco	Office Essential 2-head Coat Hook	AC1
Safco	Office Essential 3-head Coat Hook	AC2
Safco	Office Essential 6-head Coat Hook	AC3
Tennsco		
Tennsco	Z-Line Boltless Rivet Shelving	S10

MICHIGAN STATE UNIVERSITY
STUDENT RECREATION AND WELLNESS CENTER

BID PACKAGE 2

Hausmann

Hausmann	Forged Modality Cart	EQ1
Hausmann	Forged Treatment Table	EQ2
Hausmann	Forged Taping Table	EQ3
Hausmann	Forged Taping Storage Module	EQ4

Lista

Lista	Technical Work Bench	WB1
Lista	Mobile Work Bench/Toolbox	WB2

Trailex

Trailex	Aluminum Freestanding Canoe/Kayak Trailer	AC9
---------	---	-----

Uline

Uline	Laundry Cart	AC7
Uline	Heavy Duty Rolling Z-Rack Clothing Rack	AC8
Uline	Mobile Wire Shelving	S9
Uline	Mobile Slanted Wire Shelving with Bins	S11

MICHIGAN STATE UNIVERSITY
STUDENT RECREATION AND WELLNESS CENTER

BID PACKAGE 3

Enwork		
Enwork	Landing Community Table	T10
Enwork	Apron Breakroom Table	T11
Enwork	Sensation Next Café Table - Post Leg	T14
Enwork	Kinsey Café Table - X base	T15
Enwork	Oh Hey Drum Table	T18

ERG International		
ERG International	Raven Wall Bench	B2
ERG International	Ozark Lounge Chair	L1
ERG International	Mia Round Ottoman 17"h	L10
ERG International	Mia Round Ottoman 7"h	L11
ERG International	Mia Round Ottoman 13"h	L12
ERG International	Mia Square Ottoman 13"h	L13
ERG International	Mia Square Ottoman 7"h	L14
ERG International	Mia Square Ottoman 17"h	L15
ERG International	Mia Triangle Ottoman 13"h	L16
ERG International	Mia Triangle Ottoman 17"h	L17

Hamilton Sorter		
Hamilton Sorter	Masters Series Mail Slots with Storage	S7

Hightower		
HighTower	Stanza modular planter	P1
HighTower	Stanza modular planter	P2

Hon		
Hon	Cofi Executive Chair with arms	C3A
Hon	Cofi Executive Chair without arms	C3B
Hon	Skip Collaborative Chair	L2
Hon	Parkwyn Settee	L7
Hon	Parkwyn Sofa	L8
Hon	Scuplt Square End Table	T19

IOA Healthcare		
IOA Healthcare	Breeze Rocker	L6

Krug		
Krug	Callisto Student Task Stool	C4

BID PACKAGE 3 (CONTINUED)

Ancillary
Bid Package

MICHIGAN STATE UNIVERSITY
STUDENT RECREATION AND WELLNESS CENTER

Leland International

Leland International	Baraga Backless Counter Stool	C14
Leland International	Baraga Backless Low Stool	C15

Magnuson Group

Magnuson Group	Second Tree Coat Tree	AC4
----------------	-----------------------	-----

OFS Brands

OFS	Acen Office Guest Chair	C5
OFS	Stray Physician's Stool	C13
OFS	Sofy High Back Lounge	L5.1
OFS	Sofy High Back Lounge	L5.2

Swftly

Swftly	Jet Bench (base only)	B1
Swftly	Custom Pull Up Table (base only)	T20

ThreeH

ThreeH	Reception Station	WS3
--------	-------------------	-----

MICHIGAN STATE UNIVERSITY
STUDENT RECREATION AND WELLNESS CENTER

BID PACKAGE 1 SPECIFICATION SHEETS:

CLARIDGE PRODUCTS

480 Wrangler Drive
Suite 200
Coppell, TX 75019
800.364.2422

www.claridgeproducts.com

COLUMBIA LOCKERS

9031 Farrow Road
Columbia, SC 29203
803.252.3020 ext 119

www.psisc.com

GEAR GRID

670 SW 15th Street
Forest Lake, MN 55025
888.643.6694

www.geargrid.com

SAFCO PRODUCTS

9300 West Research Center Road
New Hope, MN 55428
888.971.6225

www.safcoproducts.com

TENNSCO

201 Tennsco Drive
dickson, TN 37055
866.446.8686

www.tennsco.com

Code: MB1

Qty.:

1

Manufacturer: Claridge
Item Type: GLASS MARKER BOARD
Style Series: Glass Magnetic Markerboard
Model Number: GB4X4MGMI
Dimensions: 48"w x 48"h
Description: Wall mounted glass markerboard; 1/2" low iron ultra clear glass; magnetic; includes 4 rare earth magnets; mounting hardware included; Invisi-mount option;
(IMAGE SHOWN FOR REFERENCE ONLY AND MAY NOT REFLECT SPECIFICATIONS)

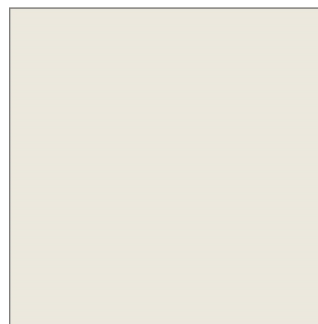
Location: 1180B(1)

Finishes

Finish 1: Calm White glass
Finish 2:
Finish 3:

Fabric / Upholstery

Manufacturer:



Glass

Code: TB1

Qty.:

1

Manufacturer: Claridge
Item Type: FABRIC TACKBOARD
Style Series: Edge Wrapped Tackboard
Model Number: 3444D
Dimensions: 48"w x 48"h
Description: Wall mounted fabric wrapped tackboard; square corners; eyelet hangers included;
(IMAGE SHOWN FOR REFERENCE ONLY AND MAY NOT REFLECT SPECIFICATIONS)

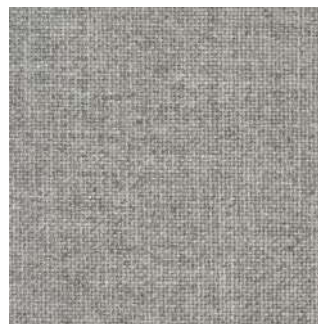
Location: 1180B(1)

Finishes

Finish 1:
Finish 2:
Finish 3:

Fabric / Upholstery

Manufacturer: Guilford of Maine FR701 Grey Mix 1690



Fabric

Code: S8

Qty.:

5

Manufacturer: Columbia Lockers
Item Type: LOCKERS
Style Series: Phenolic Lockers
Model Number: 2-Tier
Dimensions: 15"w x 15"d x 72"h

Description: 2 tier solid phenolic locker with Keyless 360 lock to match building standard; factory preassembled consisting of shelves, a single door and frame, single top, bottom and back with common intermediate uprights separating compartments; mortise and tenon construction; provide locker legs for each locker with toe-kick plates for attachment to front of legs; provide 2 hooks per locker compartment; provide one vanity shelf per locker compartment; concealed hinges
(IMAGE SHOWN FOR REFERENCE ONLY AND MAY NOT REFLECT SPECIFICATIONS)

Location: 1180B(5)

Finishes

Finish 1: Match Formica 8793 Green Slate
Finish 2:
Finish 3:

Fabric / Upholstery

Manufacturer:



Phenolic



Keyless 360 lock

Code: AC6

Qty.:

9

Manufacturer: GearGrid
Item Type: GRID WALL
Style Series: Wall Mount Storage Panel
Model Number:
Dimensions: 25.5"w x 72"h
Description: Wall mounted grid panel for storage; 1.25" heavy duty steel tube frame; .25" high strength steel wire 3"x3" grid; heavy duty 11-gauge wall mount brackets; TGIC powdercoat; accommodates various accessories (not included);
(IMAGE SHOWN FOR REFERENCE ONLY AND MAY NOT REFLECT SPECIFICATIONS)

Location: 1155(8), 1175C(1)

Finishes

Finish 1: Evergreen powdercoat
Finish 2:
Finish 3:

Fabric / Upholstery

Manufacturer:



Powdercoat

Code:	AC1	Qty.:	16
--------------	------------	--------------	-----------

Manufacturer: Safco
 ItemType: 2-HEAD COAT HOOK
 StyleSeries: Office Essentials
 Model Number: 4200
 Dimensions: 12"w x 2.75"d x 2"h
 Description: Nail head coat hook with 2 "heads"; matching back plate; mounting hardware included
 (IMAGE SHOWN FOR REFERENCE ONLY AND MAY NOT REFLECT SPECIFICATIONS)

Location: 1025A(1), 1025B(1), 1025C(1), 1065D(1), 1065G(1), 1100P(1), 1125B(1), 1125C(1), 1125D(1), 1125E(1), 1125J(1), 1125K(1), 1125L(1), 1125M(1), 1175A(1), 1175B(1)

Finishes

Finish 1: Satin Aluminum
 Finish 2:
 Finish 3:

Fabric / Upholstery

Manufacturer:



Finish

Apparel not included.

Code: AC2

Qty.:

6

Manufacturer: Safco
Item Type: 3-HEAD COAT HOOK
Style Series: Office Essentials
Model Number: 4201
Dimensions: 18"w x 2.75"d x 2"h
Description: Nail head coat hook with 3 "heads"; matching back plate; mounting hardware included
(IMAGE SHOWN FOR REFERENCE ONLY AND MAY NOT REFLECT SPECIFICATIONS)

Location: 1005(1), 1010(1), 1065B(1), 1065C(1), 1065E(1), 1065F(1)

Finishes

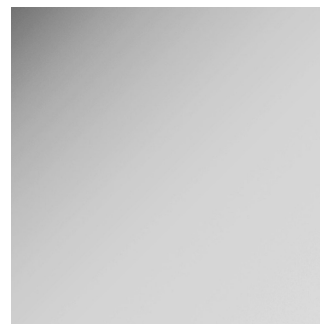
Finish 1: Satin Aluminum
Finish 2:
Finish 3:

Fabric / Upholstery

Manufacturer:



Apparel not included.



Finish

Code: AC3

Qty.:

3

Manufacturer: Safco
Item Type: 6-HEAD COAT HOOK
Style Series: Office Essentials
Model Number: 4202
Dimensions: 36"w x 2.75"d x 2"h
Description: Nail head coat hook with 6 "heads"; matching back plate; mounting hardware included
(IMAGE SHOWN FOR REFERENCE ONLY AND MAY NOT REFLECT SPECIFICATIONS)

Location: 1025(1), 1125Q(1), 2050(1)

Finishes

Finish 1: Satin Aluminum
Finish 2:
Finish 3:

Fabric / Upholstery

Manufacturer:



Apparel not included.



Finish

Code: S10

Qty.: 77

Manufacturer: Tennsco
Item Type: UTILITY SHELVING
Style Series: Z-Line Boltless Rivet Shelving
Model Number: RXHS-482472
Dimensions: 48"w x 24"d x 72"h
Description: Heavy duty reinforced shelving unit; 5 shelf levels; solid steel shelves; assembly required; 4000 lb shelf capacity, evenly distributed
(IMAGE SHOWN FOR REFERENCE ONLY AND MAY NOT REFLECT SPECIFICATIONS)

Location: 1020A(7), 1025D(2), 1035A(5), 1045A(13), 1060A(6), 1125R(7), 1155(12), 1175C(3), 2025C(4), 2035B(4), 2075A(10), 2080A(3), 3025A(1)

Finishes

Finish 1: MGY Medium Grey paint
Finish 2:
Finish 3:

Fabric / Upholstery

Manufacturer:



Paint

MICHIGAN STATE UNIVERSITY
STUDENT RECREATION AND WELLNESS CENTER

BID PACKAGE 2 SPECIFICATION SHEETS:

HAUSMANN INDUSTRIES

130 Union Street
Northvale, NJ 07647
888.428.7626
www.hausmann.com

LISTA CABINETS

10552 Humbolt Street
Los Alamitos, CA 90720
888.897.9050
www.listacabinets.com

TRAILEX

1 Industrial Park Drive
Canfield, OH 44406
800.282.5042
www.trailex.com

ULINE

12575 Uline Drive
Pleasant Prairie, WI 53158
800.295.5510
www.uline.com

Code: EQ1

Qty.:

3

Manufacturer: Hausmann
Item Type: MODALITY CART
Style Series: Forged
Model Number: A9860
Dimensions: 42"d x 42"h
Description: Aluminum modality cart with easy grip handles; door and drawer locks; 5.5" drawer with heavy duty drawer liner; electrical grommets; 2" non marking casters; heavy-duty aluminum frame with durable powder coat finish - no logo; 500 lb. weight capacity
(IMAGE SHOWN FOR REFERENCE ONLY AND MAY NOT REFLECT SPECIFICATIONS)

Location: 1025(3)

Finishes

Finish 1: P64 White frame powdercoat
Finish 2: P59 Forest accent powdercoat
Finish 3:

Fabric / Upholstery

Manufacturer:



Frame



Accent

Code: EQ2

Qty.: 5

Manufacturer: Hausmann
Item Type: TREATMENT TABLE
Style Series: Forged
Model Number: A9875
Dimensions: 30"w x 78"l
Description: Aluminum treatment table with with tape holder and open shelf at head end/drawers at foot end on patient's right side; elevating split legs; backrest; heavy-duty aluminum frame with durable powder coat finish - no logo; Pro-Form vinyl cushion with 2" foam and rounded corners; 750 lb. weight capacity
(IMAGE SHOWN FOR REFERENCE ONLY AND MAY NOT REFLECT SPECIFICATIONS)

Location: 1025(5)

Finishes

Finish 1: P64 White frame powdercoat
Finish 2: P59 Forest accent powdercoat
Finish 3:

Fabric / Upholstery

Manufacturer: V21 Forest Green vinyl



Frame



Upholstery



Accent

Code: EQ3

Qty.: 1

Manufacturer: Hausmann
Item Type: TAPING TABLE
Style Series: Forged
Model Number: A9801-BR
Dimensions: 42"d x 36"h
Description: Aluminum taping station with tape holder and open shelf; backrest; heavy-duty aluminum frame with durable powder coat finish - no logo; Pro-Form vinyl cushion with 2" foam and rounded corners; 500 lb. weight capacity
(IMAGE SHOWN FOR REFERENCE ONLY AND MAY NOT REFLECT SPECIFICATIONS)

Location: 1025(1)

Finishes

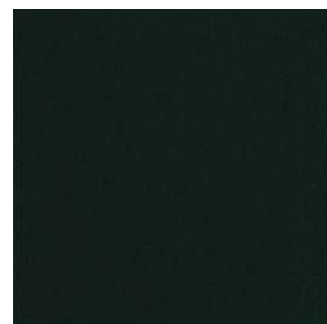
Finish 1: P64 White frame powdercoat
Finish 2: P59 Forest accent powdercoat
Finish 3:

Fabric / Upholstery

Manufacturer: V21 Forest Green vinyl



Frame



Upholstery



Accent

Code: EQ4

Qty.:

1

Manufacturer: Hausmann
Item Type: TAPING STORAGE MODULE
Style Series: Forged
Model Number: A9816
Dimensions: 42"d x 36"h
Description: Aluminum taping station storage module with 3 drawers; trash disposal compartment; heavy-duty aluminum frame with durable powder coat finish; laminate storage top; locking; 500 lb. weight capacity
(IMAGE SHOWN FOR REFERENCE ONLY AND MAY NOT REFLECT SPECIFICATIONS)

Location: 1025(1)

Finishes

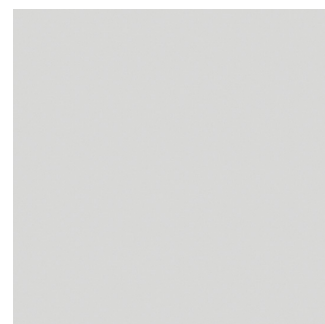
Finish 1: P64 White frame powdercoat
Finish 2: P59 Forest accent powdercoat
Finish 3: L02 Folkstone Grey laminate top

Fabric / Upholstery

Manufacturer:



Frame



Laminate



Accent

Code: WB1

Qty.: 2

Manufacturer: Lista
Item Type: WORKBENCH
Style Series: Technical Workbench
Model Number: XSTB82-72BT
Dimensions: 30"d x 72"l x 35.25"h
Description: Workbench with one door/drawer storage pedestal (right side); butcher block top; powdercoated steel base/frame; locking storage; support stringer; backstop; provide XSIRS-72BT instrument Riser shelf kit; shelf kit includes butcher block top with backstop, two 16"h shelf supports; one 15 amp 6-outlet power strip
(IMAGE SHOWN FOR REFERENCE ONLY AND MAY NOT REFLECT SPECIFICATIONS)

Location: 1155(2)

Finishes

Finish 1: Butcher Block top
Finish 2: Light Grey powdercoat
Finish 3:

Fabric / Upholstery

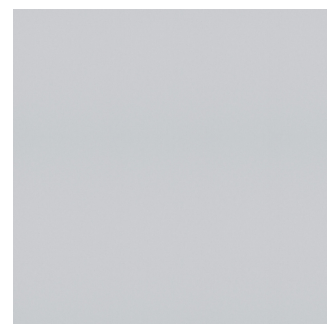
Manufacturer:



Riser with electric



Butcher Block top



Powdercoat

Code: WB2

Qty.:

1

Manufacturer: Lista
Item Type: MOBILE WORKBENCH/TOOL BOX
Style Series: HS Mobile Cabinet
Model Number: XSHS0750-0505M/XSHS1BCT
Dimensions: 22.5"d x 40.25"l x 41.5"h

Description: Mobile toolbox with 5 modular drawers (one 2" drawer with 18 compartments/one 3" drawer with 15 compartments/one 4" drawer with 12 compartments/one 7" drawer with 12 compartments/one 9" drawer with 6 compartments); 6" wheeled casters (2 swivel/2 fixed); provide added butcher block top (adds 1.75" to overall height); powdercoated steel base/frame; locking storage;
(IMAGE SHOWN FOR REFERENCE ONLY AND MAY NOT REFLECT SPECIFICATIONS)

Location: 1155(1)

Finishes

Finish 1: Butcher Block top
Finish 2: Light Grey powdercoat
Finish 3:

Fabric / Upholstery






Manufacturer:



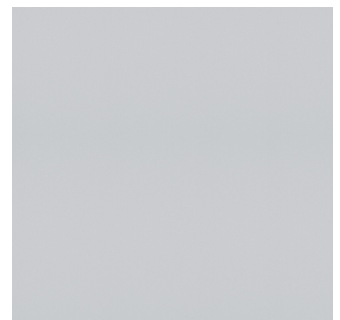
Added top



Butcher Block top

	Drawer 1 HDR518-75 (18 compartments)
	Drawer 2 HDR415-100 (15 compartments)
	Drawers 3 HDR312-125 (12 compartments)
	Drawer 4 HDR312-200 (12 compartments each)
	Drawer 5 HDR206-250 (6 compartments)

Drawer configurations



Powdercoat

Code: AC9

Qty.:

1

Manufacturer: Trailex
ItemType: FREESTANDING CANOE/KAYAK RACK
StyleSeries: Aluminum Trailers
Model Number: 801
Dimensions: 88"l x 84"w x 89"h

Description: Fully adjustable trailer for canoes and/or kayaks; includes vinyl protection on all bars; includes four safety feet; include additional web strap clips; holds up to 8 canoes/kayaks; includes casters for mobility;
(IMAGE SHOWN FOR REFERENCE ONLY AND MAY NOT REFLECT SPECIFICATIONS)

Location: 1155(1)

Finishes

Finish 1: Aluminum
Finish 2:
Finish 3:

Fabric / Upholsterv

Manufacturer:



Code: AC7

Qty.:

3

Manufacturer: Uline
ItemType: LAUNDRY CART
StyleSeries: Vinyl Basket Trucks
Model Number: H-2647
Dimensions: 42"l x 30"d x 37"h
Description: Reinforced vinyl basket truck; 18 bushel capacity; 3" polyurethane swivel casters; 600 lb. weight capacity
(IMAGE SHOWN FOR REFERENCE ONLY AND MAY NOT REFLECT SPECIFICATIONS)

Location: 1155(3)

Finishes

Finish 1: Green vinyl
Finish 2:
Finish 3:

Fabric / Upholstery

Manufacturer:



Code: AC8

Qty.:

5

Manufacturer: Uline
Item Type: MOBILE CLOTHING RACK
Style Series: Heavy Duty Rolling Z-Rack
Model Number: H-8532 with H-4277BL
Dimensions: 63"l x 24"d x 70"h
Description: Super heavy duty rolling rack with bottom shelf; large 4" swivel casters (2 locking); nests when empty; 500lb weight capacity; 15 gauge 1.25" dia steel bars; 1.5" square tube steel frame;
(IMAGE SHOWN FOR REFERENCE ONLY AND MAY NOT REFLECT SPECIFICATIONS)

Location: 1155(5)

Finishes

Finish 1: Black base and shelf
Finish 2: Chrome posts and bar
Finish 3:

Fabric / Upholstery

Manufacturer:



Code: S9

Qty.:

8

Manufacturer: Uline
Item Type: MOBILE WIRE SHELVING
Style Series: Mobile Wire Shelving
Model Number: H-4258
Dimensions: 24"d x 60"l x 78"h
Description: Mobile adjustable wire shelving cart with 4 shelves; four 5" locking swivel casters; shelves adjustable at 1" increments; 1000lb cart capacity;
(IMAGE SHOWN FOR REFERENCE ONLY AND MAY NOT REFLECT SPECIFICATIONS)

Location: 1155(8)

Finishes

Finish 1: Chrome frame
Finish 2:
Finish 3:

Fabric / Upholstery

Manufacturer:



Chrome finish

Code: S11

Qty.:

6

Manufacturer: Uline
Item Type: MOBILE SLANTED WIRE SHELVING
Style Series: Chrome Wire Shelving
Model Number: H-3128 with H-1205WH
Dimensions: 48"w x 18"d x 72"h

Description: Slanted wire shelving with stackable plastic bins for small parts storage; 5 shelves; bin dimensions: 11"w x 18"d x 10"h (total qty 16); shelves adjust in 1" increments; include H-1205WH 5" polyurethane swivel casters
(IMAGE SHOWN FOR REFERENCE ONLY AND MAY NOT REFLECT SPECIFICATIONS)

Location: 1155(3), 1175C(3)

Finishes

Finish 1: Chrome shelving
Finish 2: Green plastic bins
Finish 3: Chrome casters

Fabric / Upholstery

Manufacturer:



Bin



Casters



Frame

BID PACKAGE 3 SPECIFICATION SHEETS:

ENWORK

12900 Christopher Drive
Lowell, MI 49331
800.815.7251
www.enwork.com

ERG INTERNATIONAL

361 North Bernoulli Circle
Oxnard, CA 93030
805.981.9978
www.erginternational.com

HAMILTON CASEWORK SOLUTIONS

3158 Production Drive
Fairfield, OH 45014
800.503.9966
www.hamiltoncs.com

HIGHTOWER

211 Fraley Road
Highpoint, NC 27263
816.286.1051
www.hightower.design

HON

200 Oak Street
Muscatine, IA 52761
800.833.3964
www.hon.com

IOA HEALTHCARE

829 Blair Street
Thomasville, NC 27360
336.475.7106
www.ioa-hcf.com

KRUG

888.578.KRUG
www.krug.ca

MICHIGAN STATE UNIVERSITY
STUDENT RECREATION AND WELLNESS CENTER

BID PACKAGE 3 SPECIFICATION SHEETS (CONTINUED):

LELAND INTERNATIONAL

5695 Eagle Drive, SE
Grand Rapids, MI 49512
616.975.9260
www.lelandfurniture.com

MAGNUSON GROUP

800.342.5725
www.magnusongroup.com

OFS BRANDS

1204 East Sixth Street
Huntingburg, IN 47542
800.521.5381
www.ofs.com

SWFTLY

428 W. 24th Street
Holland, MI 49423
616.546.1972
www.goswftly.com

THREE H

156462 Clover Valley Road
New Liskeard, Ontario, Canada POJ1P0
800.767.5374
www.threeh..com

Code: T10

Qty.:

2

Manufacturer: Enwork
Item Type: COMMUNITY TABLE
Style Series: Landing
Model Number: NEL24120ABNN22/BAGHOOK-R
Dimensions: 120"l x 24"d x 42"h
Description: Panel end community table with laminate top and sides; partial height modesty panel; matching 3mm pvc edge; provide 4 bag hooks per table
(IMAGE SHOWN FOR REFERENCE ONLY AND MAY NOT REFLECT SPECIFICATIONS)

Location: 1100(2)

Finishes

Finish 1: Formica Pecan Walnut laminate
Finish 2: Black paint on bag hooks
Finish 3:

Fabric / Upholstery

Manufacturer:



Laminate



Bag hook color



Bag hook detail

Code: T11

Qty.:

2

Manufacturer: Enwork
Item Type: BREAKROOM TABLE
Style Series: Apron
Model Number: MB3672NTK
Dimensions: 36"d x 72"l x 29"h
Description: Rectangle table with steel apron base and 4 legs; HPL top with matching 3mm pvc edge;
(IMAGE SHOWN FOR REFERENCE ONLY AND MAY NOT REFLECT SPECIFICATIONS)

Location: 1180B(2)

Finishes

Finish 1: Formica Aged Ash laminate
Finish 2: Medium Tone powdercoat
Finish 3:

Fabric / Upholstery

Manufacturer:



Laminate



Base

Code: T14

Qty.:

4

Manufacturer: Enwork
Item Type: CAFÉ TABLE - POST LEG
Style Series: Sensation Next
Model Number: XX4242AN2/LBA2NT (x2 per table)
Dimensions: 42"w x 42"d x 29
Description: Square laminate top table with 3mm pvc edge; four straight post legs with levelers;
(IMAGE SHOWN FOR REFERENCE ONLY AND MAY NOT REFLECT SPECIFICATIONS)

Location: 1065B(1), 1065C(1), 1100(2)

Finishes

Finish 1: Formica Pecan Walnut laminate
Finish 2: Medium Tone powdercoat
Finish 3:

Fabric / Upholstery

Manufacturer:



Laminate



Paint

Code: T15

Qty.:

3

Manufacturer: Enwork
Item Type: CAFÉ TABLE - X BASE
Style Series: Kinsey
Model Number: XX3030AN2/KB29AT
Dimensions: 30"w x 30"d x 29
Description: Square laminate top table with 3mm pvc edge; X-base with levelers; 26" base spread
(IMAGE SHOWN FOR REFERENCE ONLY AND MAY NOT REFLECT SPECIFICATIONS)

Location: 1100(3)

Finishes

Finish 1: Formica Pecan Walnut laminate
Finish 2: Medium Tone powdercoat
Finish 3:

Fabric / Upholstery

Manufacturer:



Laminate



Paint

Code:	T18	Qty.:	5
--------------	------------	--------------	----------

Manufacturer: Enwork
 ItemType: DRUM TABLE
 StyleSeries: Oh Hey
 Model Number: DPRP2417LN2X/OCRQQ24LN
 Dimensions: 24"dia x 17"h
 Description: Drum table with laminate sides; tapered plinth base; quartz add on top
 (IMAGE SHOWN FOR REFERENCE ONLY AND MAY NOT REFLECT SPECIFICATIONS)

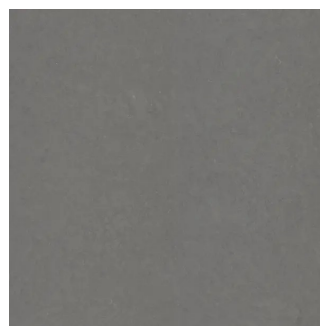
Location: 1000(3), 1015(1), 1100(1)

Finishes

Finish 1: Cambria Carrick Quartz top
 Finish 2: Formica Pecan Walnut laminate
 Finish 3: Medium Tone plinth paint

Fabric / Upholsterv

Manufacturer:



Quartz top



Laminate sides



Plinth base

Code: B2

Qty.:

1

Manufacturer: ERG International

ItemType: BENCH

StyleSeries: Raven

Model Number: Per description

Dimensions: 144"l x 20"d x 42"b.h. (18"s.h.)

Description: High back wall bench consisting of:
Qty 3 - #8372HB.2FO.GD 48"w straight high back banquette with 4 legs each; 2 fabric option; ganging device for each section
Back uph A: Wolf Gordon GOH 33503420 Marcotte Basil
Seat uph B: Maharam Gild 466432-001 Rainforest
(IMAGE SHOWN FOR REFERENCE ONLY AND MAY NOT REFLECT SPECIFICATIONS)

Location: 1000(1)

Finishes

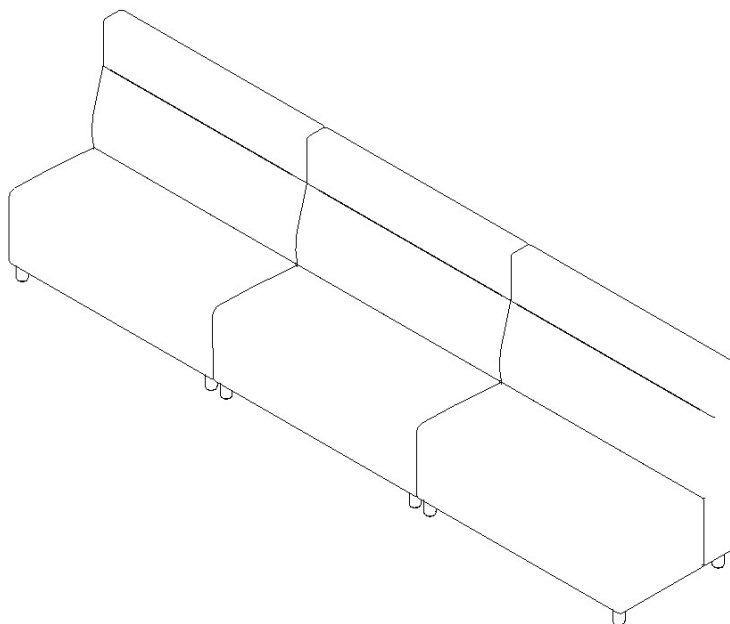
Finish 1: Argento Metallic metal paint

Finish 2:

Finish 3:

Fabric / Upholsterv

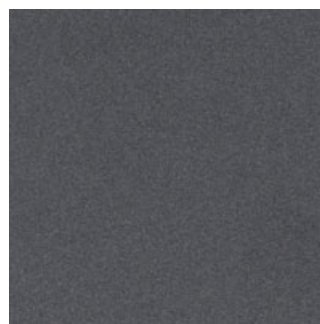
Manufacturer:



Upholstery A (back)



Upholstery B (seat)



Paint

Code: L1

Qty.:

4

Manufacturer: ERG International
Item Type: CLUB CHAIR
Style Series: Ozark Lounge
Model Number: 2206-2FO
Dimensions: 32.25"w x 28.75"d x 31"h

Description: Club chair with fully upholstered foam body over multi-ply hardwood frame; tongue n groove construction nailed and glued; 2" seat cushion with flexible webbing; no sag springs with interlocking helicoil springs; 8"h x 1.5"dia steel angled legs; factory installed adjustable glides; with clean out; 500lb weight capacity; 2 upholstery option:
Upholstery A (back): Maharam Lariat 440401-046 Reseda
Upholstery B (seat): Maharam Lariat 440401-047 Purslane
(IMAGE SHOWN FOR REFERENCE ONLY AND MAY NOT REFLECT SPECIFICATIONS)

Location: 1015(3), 1100(1)

Finishes

Finish 1: Argento Metallic paint
Finish 2:
Finish 3:

Fabric / Upholstery

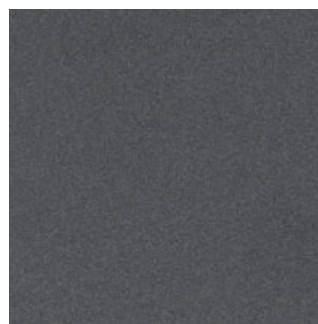
Manufacturer: See Description



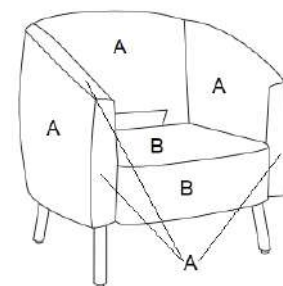
Upholstery A (back)



Upholstery B (seat)



Paint



Upholstery Diagram

Code: L10

Qty.:

2

Manufacturer: ERG International
Item Type: ROUND OTTOMAN
Style Series: Mia
Model Number: 2104-PHNDL
Dimensions: 18"dia x 17"h

Description: Upholstered ottoman; multi-ply hardwood fram with high density foam and dacron top cover; adjustable steel glides; pull handle; 350 lb weight capacity
(IMAGE SHOWN FOR REFERENCE ONLY AND MAY NOT REFLECT SPECIFICATIONS)

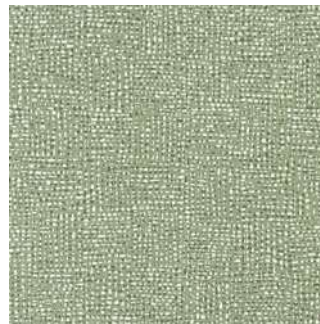
Location: 1000(2)

Finishes

Finish 1:
Finish 2:
Finish 3:

Fabric / Upholstery

Manufacturer: Wolf Gordon GOH 33503362 Marcotte Moss



Upholstery

Code:	L11	Qty.:	2
--------------	------------	--------------	----------

Manufacturer: ERG International
 ItemType: ROUND OTTOMAN
 StyleSeries: Mia
 Model Number: 2100-PHNDL
 Dimensions: 18"dia x 7"h
 Description: Upholstered ottoman; multi-ply hardwood fram with high density foam and dacron top cover; adjustable steel glides; pull handle; 350 lb weight capacity
 (IMAGE SHOWN FOR REFERENCE ONLY AND MAY NOT REFLECT SPECIFICATIONS)

Location: 1000B(2)

Finishes

Finish 1:
 Finish 2:
 Finish 3:

Fabric / Upholsterv

Manufacturer: Maharam Lariat 440401-046 Reseda



Upholstery

Code:	L12	Qty.:	2
--------------	------------	--------------	----------

Manufacturer: ERG International
 ItemType: ROUND OTTOMAN
 StyleSeries: Mia
 Model Number: 2102-PHNDL
 Dimensions: 18"dia x 13"h
 Description: Upholstered ottoman; multi-ply hardwood fram with high density foam and dacron top cover; adjustable steel glides; pull handle; 350 lb weight capacity
 (IMAGE SHOWN FOR REFERENCE ONLY AND MAY NOT REFLECT SPECIFICATIONS)

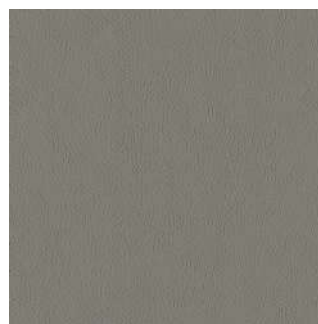
Location: 1000B(2)

Finishes

Finish 1:
 Finish 2:
 Finish 3:

Fabric / Upholsterv

Manufacturer: Maharam Lariat 440401-048 Spire



Upholstery

Code: L13

Qty.:

1

Manufacturer: ERG International
Item Type: SQUARE OTTOMAN
Style Series: Mia
Model Number: 2127-PHNDL
Dimensions: 18"w x 18"d x 13"h

Description: Upholstered ottoman; multi-ply hardwood fram with high density foam and dacron top cover; adjustable steel glides; pull handle; 350 lb weight capacity
(IMAGE SHOWN FOR REFERENCE ONLY AND MAY NOT REFLECT SPECIFICATIONS)

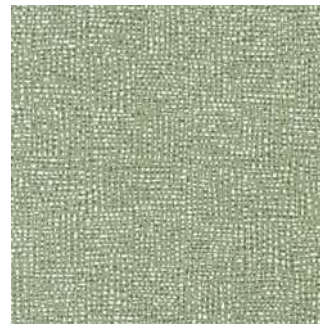
Location: 1000B(1)

Finishes

Finish 1:
Finish 2:
Finish 3:

Fabric / Upholstery

Manufacturer: Wolf Gordon GOH 33503362 Marcotte Moss



Upholstery

Code:	L14	Qty.:	1
--------------	------------	--------------	----------

Manufacturer: ERG International
 ItemType: SQUARE OTTOMAN
 StyleSeries: Mia
 Model Number: 2125-PHNDL
 Dimensions: 18"w x 18"d x 7"h
 Description: Upholstered ottoman; multi-ply hardwood fram with high density foam and dacron top cover; adjustable steel glides; pull handle; 350 lb weight capacity
 (IMAGE SHOWN FOR REFERENCE ONLY AND MAY NOT REFLECT SPECIFICATIONS)

Location: 1000B(1)

Finishes

Finish 1:
 Finish 2:
 Finish 3:

Fabric / Upholstery

Manufacturer: Maharam Lariat 440401-046 Reseda



Upholstery

Code:	L15	Qty.:	2
--------------	------------	--------------	----------

Manufacturer: ERG International
 ItemType: SQUARE OTTOMAN
 StyleSeries: Mia
 Model Number: 2129-PHNDL
 Dimensions: 18"w x 18"d x 17"h
 Description: Upholstered ottoman; multi-ply hardwood fram with high density foam and dacron top cover; adjustable steel glides; pull handle; 350 lb weight capacity
 (IMAGE SHOWN FOR REFERENCE ONLY AND MAY NOT REFLECT SPECIFICATIONS)

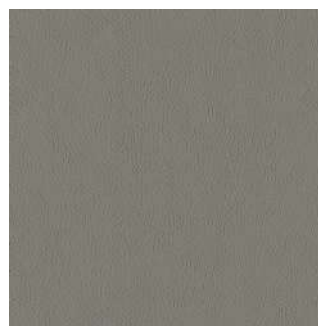
Location: 1125Q(2)

Finishes

Finish 1:
 Finish 2:
 Finish 3:

Fabric / Upholsterv

Manufacturer: Maharam Lariat 440401-048 Spire



Upholstery

Code:	L16	Qty.:	2
--------------	------------	--------------	----------

Manufacturer: ERG International
 ItemType: TRIANGLE OTTOMAN
 StyleSeries: Mia
 Model Number: 2152-PHNDL
 Dimensions: 20"w x 20"d x 13"h
 Description: Upholstered ottoman; multi-ply hardwood fram with high density foam and dacron top cover; adjustable steel glides; pull handle; 350 lb weight capacity
 (IMAGE SHOWN FOR REFERENCE ONLY AND MAY NOT REFLECT SPECIFICATIONS)

Location: 1000(1), 1000B(1)

Finishes

Finish 1:
 Finish 2:
 Finish 3:

Fabric / Upholstery

Manufacturer: Maharam Lariat 440401-046 Reseda



Upholstery

Code:	L17	Qty.:	2
--------------	------------	--------------	----------

Manufacturer: ERG International
 ItemType: TRIANGLE OTTOMAN
 StyleSeries: Mia
 Model Number: 2154-PHNDL
 Dimensions: 20"w x 20"d x 17"h
 Description: Upholstered ottoman; multi-ply hardwood fram with high density foam and dacron top cover; adjustable steel glides; pull handle; 350 lb weight capacity
 (IMAGE SHOWN FOR REFERENCE ONLY AND MAY NOT REFLECT SPECIFICATIONS)

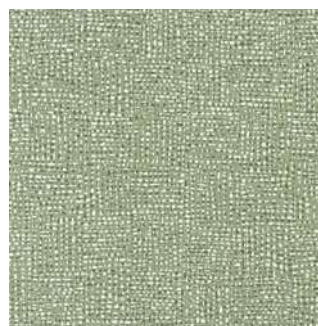
Location: 1000(2)

Finishes

Finish 1:
 Finish 2:
 Finish 3:

Fabric / Upholstery

Manufacturer: Wolf Gordon GOH 33503362 Marcotte Moss



Upholstery

Code: S7

Qty.:

1

Manufacturer: Hamilton Sorter
Item Type: MAIL SLOTS WITH STORAGE
Style Series: Masters Series
Model Number: FSM481676LBSR
Dimensions: 48"w x 16"d x 76"h

Description: Freestanding sort module with storage on bottom; laminate case; add sliding doors with square pull on bottom storage; four columns of mail slots (8 slots per column);
(IMAGE SHOWN FOR REFERENCE ONLY AND MAY NOT REFLECT SPECIFICATIONS)

Location: 1125A(1)

Finishes

Finish 1: Formica Green Slate 8793-58 laminate
Finish 2: Black pulls
Finish 3:

Fabric / Upholstery

Manufacturer:



Laminate



Pull Style



Pull Color

Code: P1

Qty.:

1

Manufacturer: HighTower
Item Type: MODULAR PLANTER
Style Series: Stanza
Model Number: Per Description
Dimensions: Per Description

Description: Modular planter wall consisting of:
Qty 2 - HTSZ025-KGP 24"h Stanza Planter - End (13"w x 13"d x 23.8"h)
Qty 2 - HTSZ040-KGP Stanza Planter Top - End
Qty 2 - HTSZ010-KGP 24"h Stanza Planter - Curve (38.5"w x 15"d x 23.8"h)
Qty 2 - HTSZ015-KGP 35"h Stanza Planter - Curve (38.5"w x 15"d x 35"h)
Ganging clips included; adjustable drainage tray; ships flat-packed, can be assembled without tools
(IMAGE SHOWN FOR REFERENCE ONLY AND MAY NOT REFLECT SPECIFICATIONS)

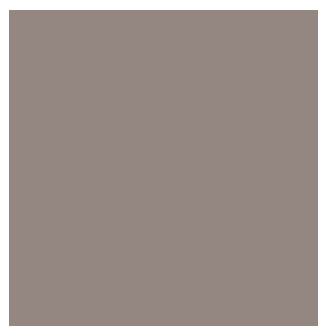
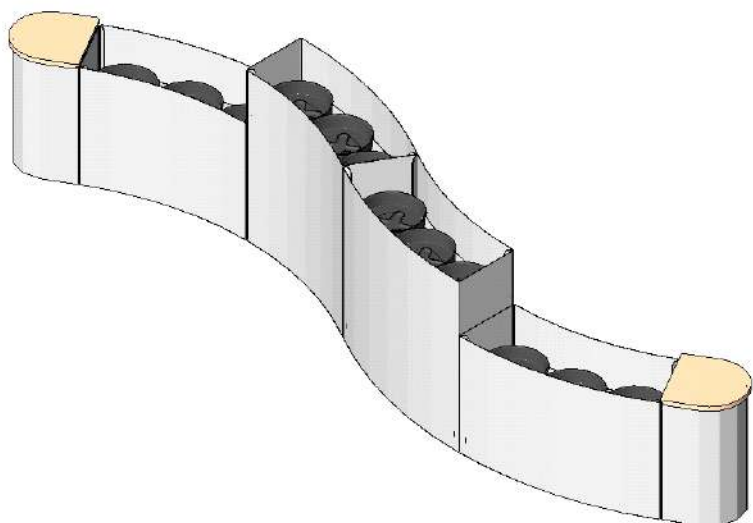
Location: 1015(1)

Finishes

Finish 1: Khaki Gloss powdercoat
Finish 2: White Oak wood top
Finish 3:

Fabric / Upholstery

Manufacturer:



Powdercoat



Top

Code: P2

Qty.:

1

Manufacturer: HighTower
Item Type: MODULAR PLANTER
Style Series: Stanza
Model Number: Configuration F Per Description
Dimensions: 145"w x 17.6"d x 24"h

Description: Modular planter wall Configuration F consisting of:
Qty 2 - HTSZ005-KGP 16"h Stanza Planter - Curve (38.5"w x 15"d x 15.8"h)
Qty 2 - HTSZ010-KGP 24"h Stanza Planter - Curve (38.5"w x 15"d x 23.8"h)
Ganging clips included; adjustable drainage tray; ships flat-packed, can be assembled without tools
(IMAGE SHOWN FOR REFERENCE ONLY AND MAY NOT REFLECT SPECIFICATIONS)

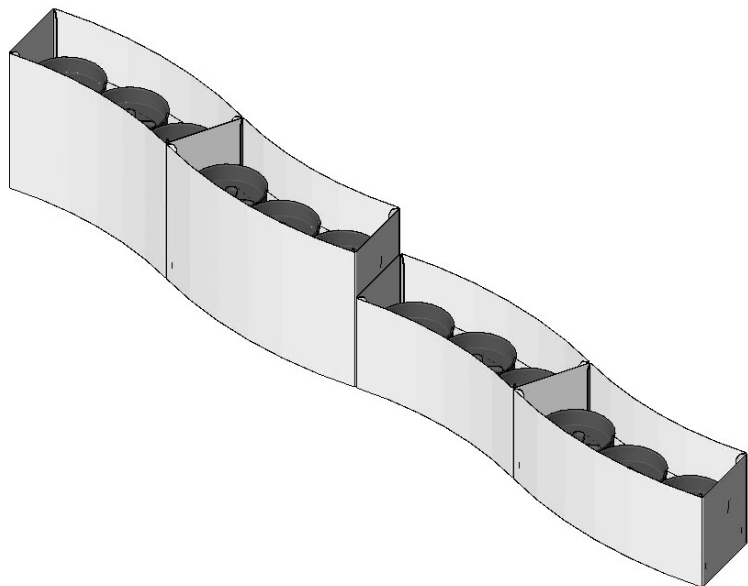
Location: 1100(1)

Finishes

Finish 1: Khaki Gloss powdercoat
Finish 2:
Finish 3:

Fabric / Upholstery

Manufacturer:



Powdercoat

Code: C3A

Qty.: 14

Manufacturer: HON
Item Type: HIGH BACK CONFERENCE CHAIR WITH ARMS
Style Series: Cofi Executive Chair
Model Number: HCFEU.Y0.STC.P.S.RS05.CHSTC09.PA
Dimensions: 27 1/4"w x 26 1/2"d x 46 7/16" b.h.

Description: High back conference chair with channel stitch detail; fixed polished aluminum arms with arm caps; synchro-tilt seat control mechanism; standard cylinder; all surface casters; polished aluminum base
(IMAGE SHOWN FOR REFERENCE ONLY AND MAY NOT REFLECT SPECIFICATIONS)

Location: 1125P(14)

Finishes

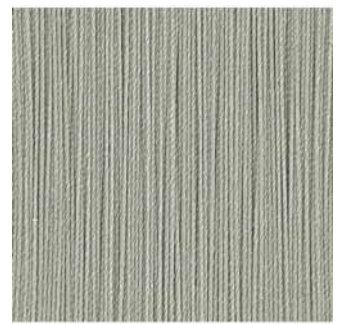
Finish 1: Polished Aluminum arms and base
Finish 2: Black arm caps
Finish 3: Light Gray stitch color

Fabric / Upholstery

Manufacturer: Ultrafabrics Brisa Ash 533-5802



Upholstery



Stitching



Base and Arms

Code: C3B

Qty.:

2

Manufacturer: HON
Item Type: HIGH BACK CONFERENCE CHAIR ARMLESS
Style Series: Cofi Executive Chair
Model Number: HCFEU.Y0.STC.N.S.RS05.CHSTC09.PA
Dimensions: 27 1/4"w x 26 1/2"d x 46 7/16" b.h.
Description: High back conference chair with channel stitch detail; armless; synchro-tilt seat control mechanism; standard cylinder; all surface casters; polished aluminum base
(IMAGE SHOWN FOR REFERENCE ONLY AND MAY NOT REFLECT SPECIFICATIONS)

Location: 1125P(2)

Finishes

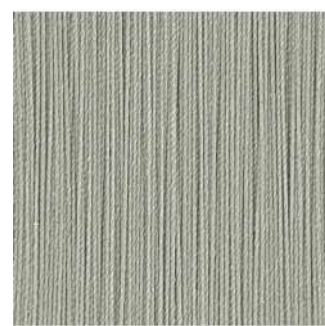
Finish 1: Polished Aluminum base
Finish 2: Light Gray stitch color
Finish 3:

Fabric / Upholstery

Manufacturer: Ultrafabrics Brisa Ash 533-5802



Upholstery



Stitching



Base

Code: L2

Qty.: 12

Manufacturer: HON
Item Type: COLLABORATIVE CHAIR
Style Series: Skip
Model Number: HON-Skip-HQQ1-315-001
Dimensions: 28"w x 35 1/2"d x 31"b.h.
Description: Hard plastic rocking chair with built in handle;
(IMAGE SHOWN FOR REFERENCE ONLY AND MAY NOT REFLECT SPECIFICATIONS)

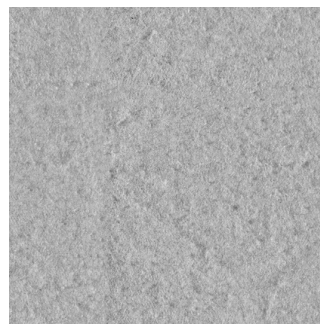
Location: 1000(2), 1015(10)

Finishes

Finish 1: Multi-colored grey hard plastic
Finish 2:
Finish 3:

Fabric / Upholstery

Manufacturer:



Plastic

Code: L7

Qty.:

1

Manufacturer: HON
Item Type: SETTEE
Style Series: Parkwyn
Model Number: HVLVL2
Dimensions: 53 1/2"w x 26 3/4"d x 30"b.h.
Description: Fully upholstered settee with metal legs
(IMAGE SHOWN FOR REFERENCE ONLY AND MAY NOT REFLECT SPECIFICATIONS)

Location: 1125Q(1)

Finishes

Finish 1: Black painted legs
Finish 2:
Finish 3:

Fabric / Upholstery

Manufacturer: Black Polyurethane upholstery



Upholstery



Legs

Code:	L8	Qty.:	1
--------------	-----------	--------------	----------

Manufacturer: HON
 ItemType: SOFA
 StyleSeries: Parkwyn
 Model Number: HVLVL3
 Dimensions: 77"w x 26 3/4"d x 30"b.h.
 Description: Fully upholstered sofa with metal legs
 (IMAGE SHOWN FOR REFERENCE ONLY AND MAY NOT REFLECT SPECIFICATIONS)

Location: 1125Q(1)

Finishes

Finish 1: Black painted legs
 Finish 2:
 Finish 3:

Fabric / Upholstery

Manufacturer: Black Polyurethane upholstery



Upholstery



Legs

Code: T19

Qty.:

1

Manufacturer: HON
Item Type: SQUARE END TABLE
Style Series: Sculpt
Model Number: HTLSCUSQRT20HML.N.LWBE.P02.G
Dimensions: 20 1/4"w x 20 1/4"d x 22 5/16"h
Description: Square tray top side table with metal legs
(IMAGE SHOWN FOR REFERENCE ONLY AND MAY NOT REFLECT SPECIFICATIONS)

Location: 1125Q(1)

Finishes

Finish 1: Beigewood laminate top
Finish 2: Charcoal painted tray and legs
Finish 3:

Fabric / Upholstery

Manufacturer:



Laminate top



Paint

Code:	L6	Qty.:	1
--------------	-----------	--------------	----------

Manufacturer: IOA Healthcare Furniture
 ItemType: HIGH BACK ROCKER
 StyleSeries: Breeze Rocker
 Model Number: 363RK
 Dimensions: 30"w x 30"d x 43"b.h. (17"s.h.)
 Description: Mesh back rocker with upholstered seat and arms;
 (IMAGE SHOWN FOR REFERENCE ONLY AND MAY NOT REFLECT SPECIFICATIONS)

Location: 1100P(1)

Finishes

Finish 1: Birmingham back mesh
 Finish 2: #1 Black powdercoat
 Finish 3:

Fabric / Upholstery

Manufacturer: Maharam Lariat 440401-047 Purslane (grade E)



Back Mesh



Powdercoat



Seat Upholstery

Code: C4

Qty.: 7

Manufacturer: Krug
Item Type: STUDENT TASK STOOL
Style Series: Callisto
Model Number: CAT1M11B
Dimensions: 25"w x 26"d x 44.75"h. (23-30.5" s.h.)
Description: Task stool with mesh seat and back; fixed cantilever arm; swivel seat; chrome foot ring; pneumatic height adjustment; polymer base with soft wheel casters;
(IMAGE SHOWN FOR REFERENCE ONLY AND MAY NOT REFLECT SPECIFICATIONS)

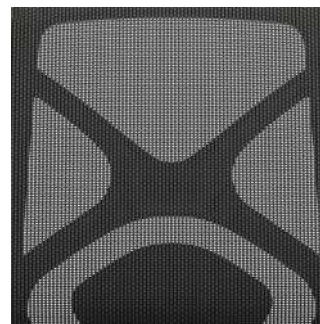
Location: 1125R(2), 1130(3), 1175(2)

Finishes

Finish 1: Black mesh
Finish 2: Black base and frame
Finish 3:

Fabric / Upholstery

Manufacturer:



Seat and Back



Frame

Code: C14

Qty.:

6

Manufacturer: Leland International
Item Type: BACKLESS STOOL
Style Series: Baraga Counter Stool
Model Number: BARC-F
Dimensions: 20"w x 16"d x 25"h

Description: Backless perch counter stool; PET felt seat; steel tube base; nylon glides; tested up to 500lbs.;
(IMAGE SHOWN FOR REFERENCE ONLY AND MAY NOT REFLECT SPECIFICATIONS)

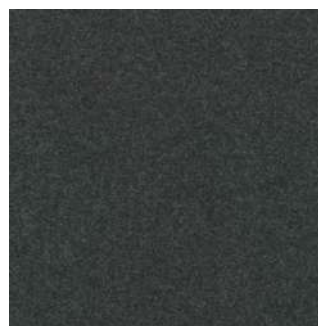
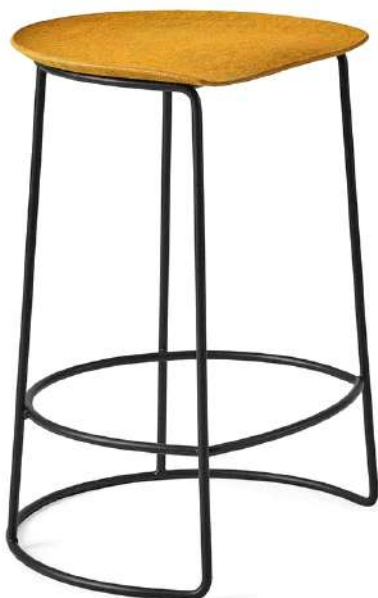
Location: 1015B(6)

Finishes

Finish 1: MMR Matte Mercury powdercoat base
Finish 2: PET13 Charcoal felt seat finish
Finish 3:

Fabric / Upholstery

Manufacturer:



PET Felt seat



Powdercoat

Code: C15

Qty.:

4

Manufacturer: Leland International

ItemType: LOW STOOL

StyleSeries: Baraga

Model Number: BARS-F

Dimensions: 19"w x 15"d x 18"h

Description: Backless perch low

stool; PET felt seat; steel tube base; nylon glides; tested up to 500lbs.;

(IMAGE SHOWN FOR REFERENCE ONLY AND MAY NOT REFLECT SPECIFICATIONS)

Location: 1015B(4)

Finishes

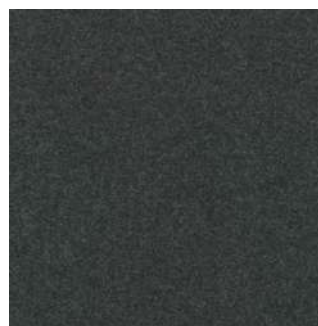
Finish 1: MMR Matte Mercury powdercoat base

Finish 2: PET13 Charcoal felt seat finish

Finish 3:

Fabric / Upholstery

Manufacturer:



PET Felt



Powdercoat

Code: AC4

Qty.:

2

Manufacturer: Magnuson Group

ItemType: COAT TREE

StyleSeries: Second Tree

Model Number:

Dimensions: 17.75"sq x 74.75"h

Description: Painted steel coat tree with five oak wood hooks

(IMAGE SHOWN FOR REFERENCE ONLY AND MAY NOT REFLECT SPECIFICATIONS)

Location: 1125(1), 1125R(1)

Finishes

Finish 1: Textured Forge Grey powdercoat

Finish 2: Oak wood hooks

Finish 3:

Fabric / Upholstery

Manufacturer:



Paint



Hooks

Code:	C5	Qty.:	30
--------------	-----------	--------------	-----------

Manufacturer: OFS
 ItemType: OFFICE GUEST CHAIR
 StyleSeries: Acen
 Model Number: 50091-SLGP-W48-MSM
 Dimensions: 23.75"w x 24"d x 34.75" b.h. (18"s.h.)
 Description: Nesting seat chair with mesh back and upholstered seat with molded seat foam; cantilevered pivoting arms; twin-wheel injection molded nylon casters; 7/7" steel tube frame with high impact nylon back; sliding seat
 (IMAGE SHOWN FOR REFERENCE ONLY AND MAY NOT REFLECT SPECIFICATIONS)

Location: 1025B(2), 1025C(2), 1125B(2), 1125C(2), 1125D(2), 1125E(2), 1125J(2), 1125K(4), 1125L(2), 1125M(2), 1175A(2), 1175B(2), 2040(2), 2045(2)

Finishes

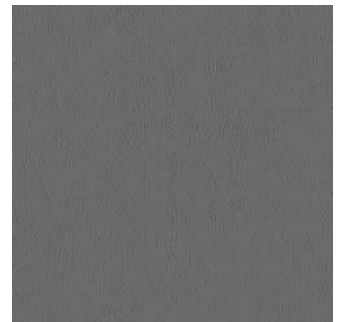
Finish 1: MSM Storm mesh back
 Finish 2: SLGP Silver frame/grey plastic
 Finish 3: Black casters

Fabric / Upholstery

Manufacturer: Maharam Lariat 440401-024 Zinc



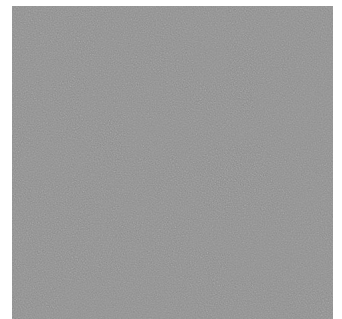
Mesh back



Seat Upholstery



Plastic Frame



Powdercoat

Code: C13

Qty.:

6

Manufacturer: OFS
Item Type: EXAM STOOL
Style Series: Stray Physician's Stool by Carolina
Model Number: 2500-FGR-FTR-B23G-W49-X9
Dimensions: 26" dia (16.25" dia seat) x 15.5-20.75"h
Description: Swivel backless swivel stool with footring; nylon base; upholstered seat; soft wheel casters
(IMAGE SHOWN FOR REFERENCE ONLY AND MAY NOT REFLECT SPECIFICATIONS)

Location: 1025(5), 1025A(1)

Finishes

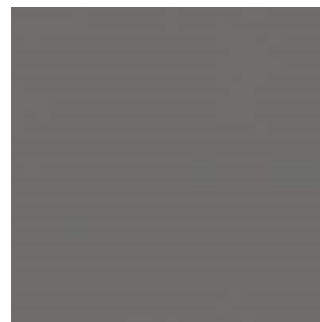
Finish 1: Graphite seat (underside)
Finish 2: Graphite nylon base
Finish 3:

Fabric / Upholstery

Manufacturer: Maharam Lariat 440401-046858 Reseda



Seat Upholstery



Base

Code: L5.1

Qty.:

4

Manufacturer: OFS
Item Type: HIGH BACK LOUNGE CHAIR
Style Series: Sofy
Model Number: 110141MAL-GRPH-BK4
Dimensions: 33"w x 30"d x 42"b.h.(16.5"s.h.)
Description: Fully upholstered high back lounge chair with metal frame; molded foam seat shell, seat and back cushion; 20mm steel tube base; zippered upholstered cover; plastic glides
UPH A: inside seat and back cushions Knoll Textiles Vast 466945-007 Valley
UPH B: outside back and arms Maharam Lariate 440401-046 Reseda
(IMAGE SHOWN FOR REFERENCE ONLY AND MAY NOT REFLECT SPECIFICATIONS)

Location: 1000(2), 1015(2)

Finishes

Finish 1: Graphite powdercoat
Finish 2: Black zipper
Finish 3:

Fabric / Upholstery

Manufacturer: Per description



Upholstery A



Upholstery B



Frame

Code: L5.2

Qty.:

2

Manufacturer: OFS
Item Type: HIGH BACK LOUNGE CHAIR
Style Series: Sofy
Model Number: 110141MAL-GRPH-GY4
Dimensions: 33"w x 30"d x 42"b.h.(16.5"s.h.)
Description: Fully upholstered high back lounge chair with metal frame; molded foam seat shell, seat and back cushion; 20mm steel tube base; zippered upholstered cover; plastic glides
(IMAGE SHOWN FOR REFERENCE ONLY AND MAY NOT REFLECT SPECIFICATIONS)

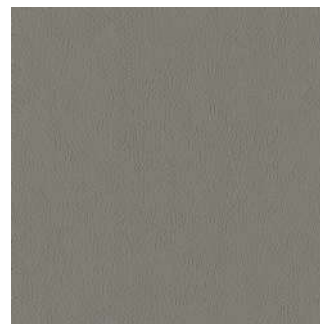
Location: 1100(2)

Finishes

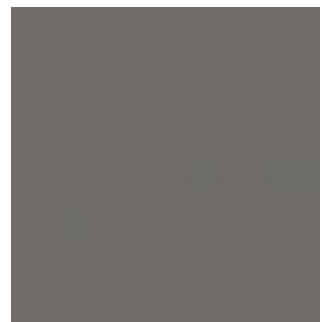
Finish 1: Graphite powdercoat
Finish 2: Grey zipper
Finish 3:

Fabric / Upholstery

Manufacturer: Maharam Lariat 440401-048 Spire



Upholstery



Frame

Code: B1

Qty.:

11

Manufacturer: Swiftly
Item Type: BENCH
Style Series: Jet
Model Number: Jet
Dimensions: 60"w x 15"d x 18"h

Description: Steel bench base only for use with owner produced and provided wood tops; 2 bases per bench;
Coordinate wood material delivery from MSU Shadows with Jeff Kasdorf (kasdorf@msu.edu) and
Christine Lockwood (lockwo47@msu.edu) for assembly .
(IMAGE SHOWN FOR REFERENCE ONLY AND MAY NOT REFLECT SPECIFICATIONS)

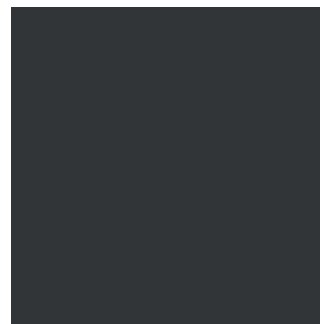
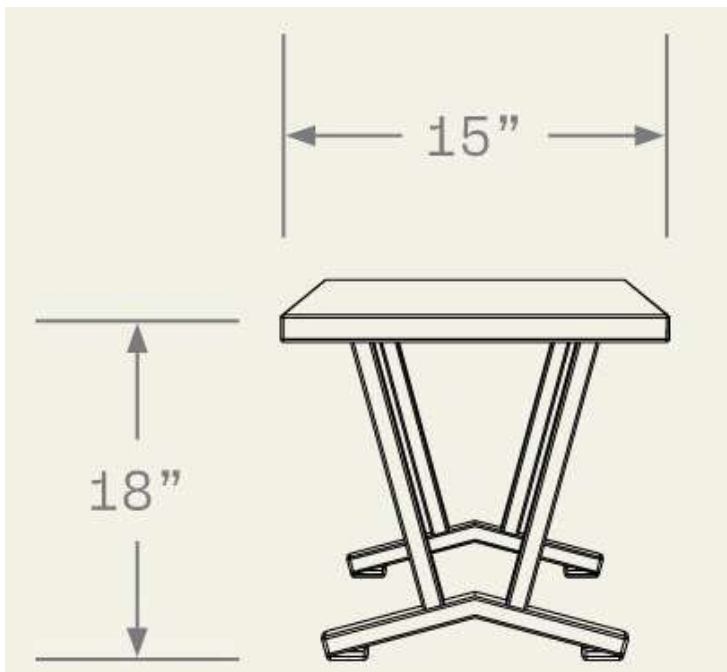
Location: 1HW1.2(2), 2030(3), 2HW1(2), 2HW2(2), 3005(2)

Finishes

Finish 1: RAL 7021 Black Grey powdercoat
Finish 2:
Finish 3:

Fabric / Upholstery

Manufacturer:



Powdercoat

Code: T20

Qty.:

7

Manufacturer: Swiftly
Item Type: PULL UP TABLE
Style Series: Custom
Model Number: Custom
Dimensions: Per image

Description: Steel laptop table base only for use with owner produced and provided wood tops; steel base designed to sustain weight up to 300lbs; provide felt pads for base for use on hard floors; Coordinate wood material delivery from MSU Shadows with Jeff Kasdorf (kasdorf@msu.edu) and Christine Lockwood (lockwo47@msu.edu) for assembly .
(IMAGE SHOWN FOR REFERENCE ONLY AND MAY NOT REFLECT SPECIFICATIONS)

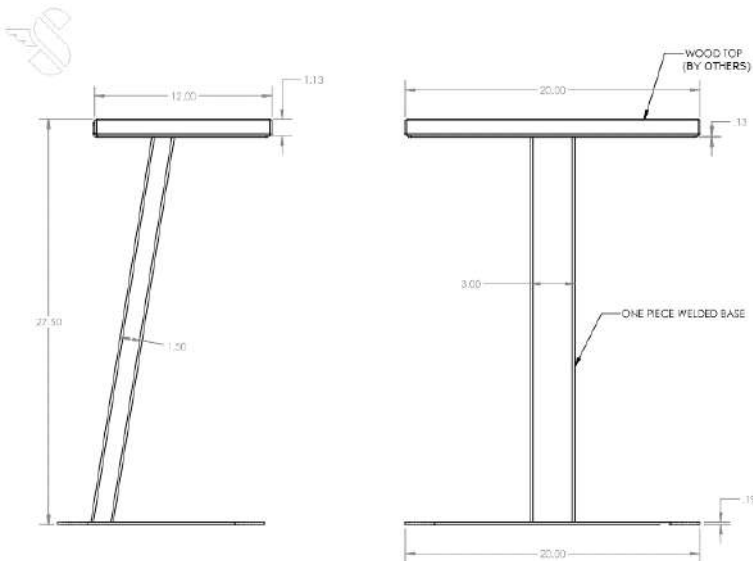
Location: 1000(3), 1100P(1), 1125Q(3)

Finishes

Finish 1: RAL 7021 Black Grey powdercoat
Finish 2:
Finish 3:

Fabric / Upholstery

Manufacturer:



Powdercoat



Finished Table Design

Code: WS3

Qty.: 1

Manufacturer: ThreeH
Item Type: RECEPTION STATION
Style Series: Varies
Model Number: Per Description
Dimensions: Per Description

Description: Reception workstation consisting of:
Qty 1 - SP-GRDR-2139 30"D X 36"L X 30"H Special rectangle desk with panel 8" above desk; full leg left extended to 89"; 36" transaction top; grommet left; standard cable management
Qty 1 - GRDR423030-HRHFHF-000000-SEW0ST0 30"D x 42"L x 30"H Rectangle desk with recessed left leg; full right leg; full modesty; standard cable management
Qty 1 - GRRC371342-H1H3LE-1200SS-SE 13"D x 37"L x 42"H Reception cap; 3" support left, 11" support right; 12"w left return; elevated apron
Qty 1 - PSAS5828200-W3SO2000 Height adjustable desk 58"L X 28"D; 2 stage height adjustment 27.5"-47"; max capacity 200lbs; no privacy screen; center grommet; 1mm pvc edge;
Qty 1 - PSP51618CH-1122 Box/Box/File pedestal; standard pull; locking; 29"h
Provide all required hardware and components to complete work station configuration;
(IMAGE SHOWN FOR REFERENCE ONLY AND MAY NOT REFLECT SPECIFICATIONS)

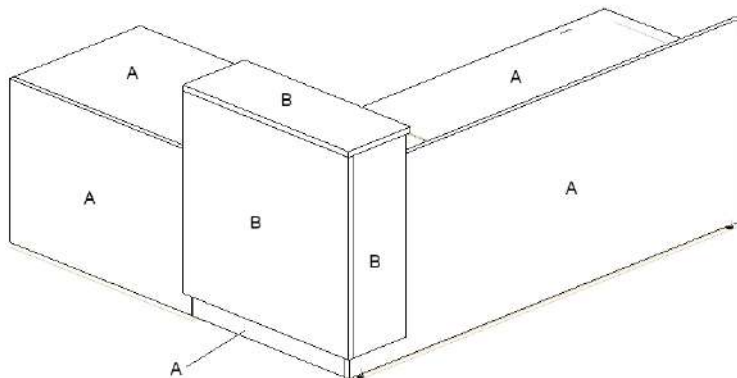
Location: 1125A(1)

Finishes

Finish 1: 8221K Wilsonart Sap Walnut wood grain laminate A
Finish 2: S565 Storm Grey reception cap laminate B
Finish 3: Grey metal powdercoat

Fabric / Upholstery

Manufacturer:



Wood Laminate A



Reception Cap Laminate B



Powdercoat